

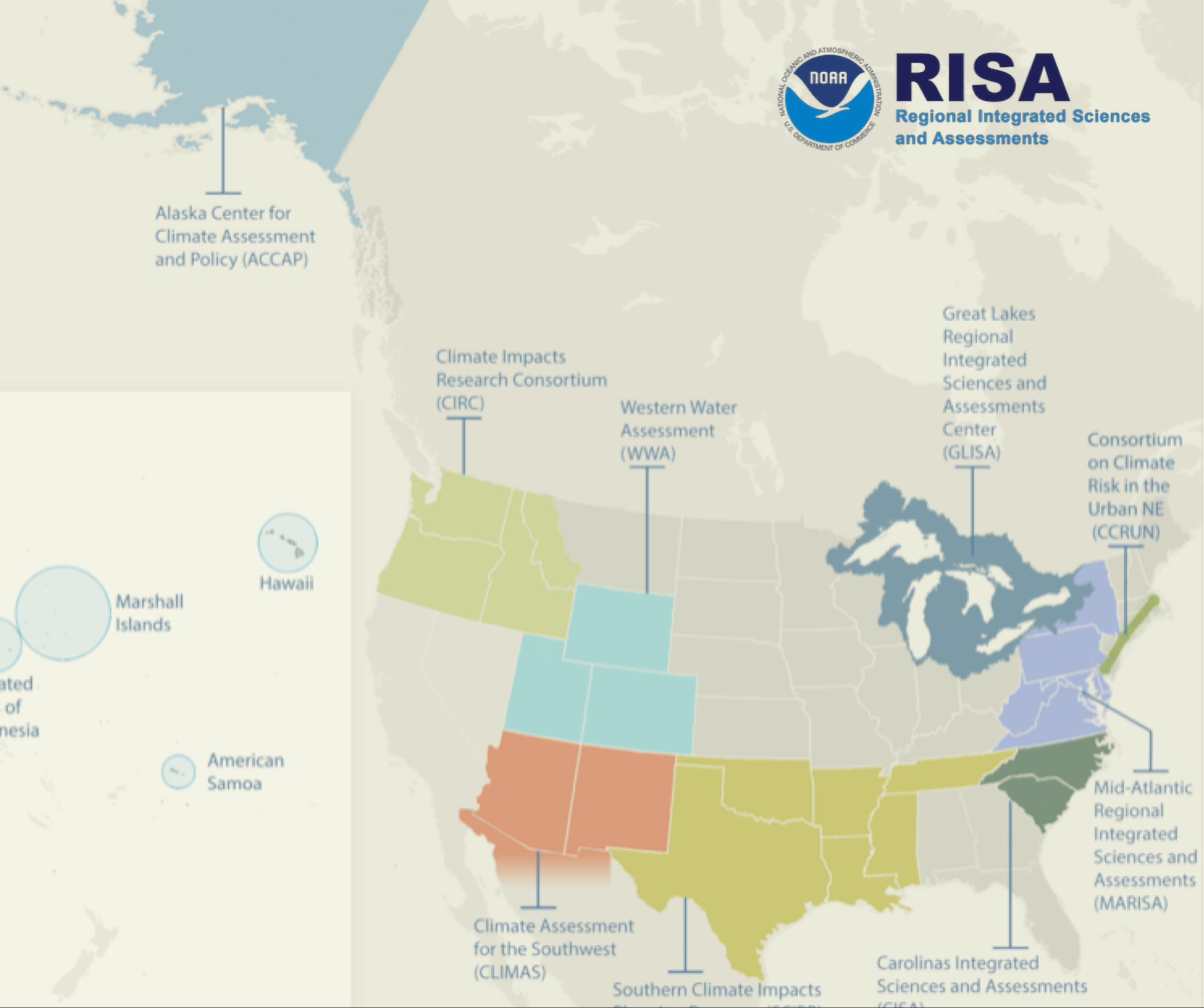


Identifying and engaging with groups vulnerable to heat risk

ASHLEY WARD, PHD
CISA

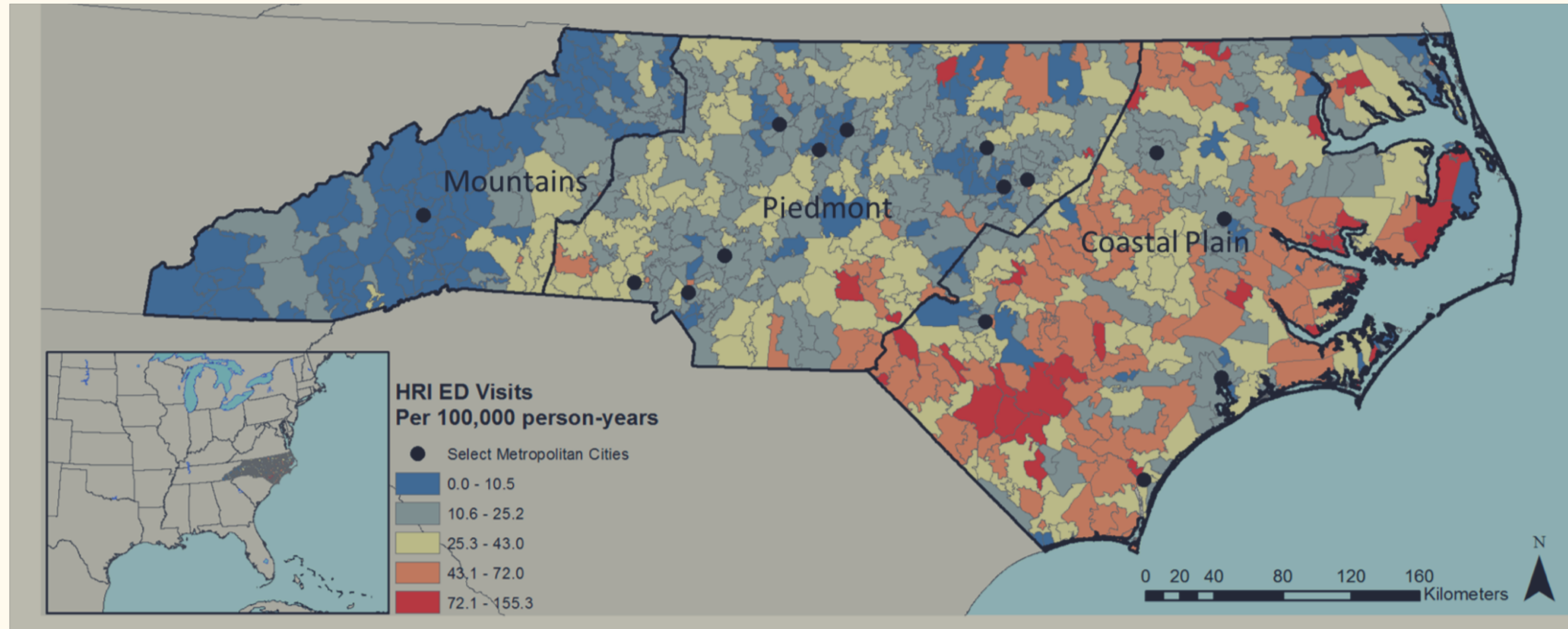


RISA
Regional Integrated Sciences
and Assessments



Focus Areas

- Climate and Water
- Coastal Climate
- Climate and Public Health
- Climate Communications and Outreach



Partners

SERCC: Southeast Regional
Climate Center
NC CDC BRACE
County Health Departments
Heat-Health Working Group

Engagements

1 Webinar
6 Large Engagements (>20
people)
8 Small Engagements
(approx 5 people)
1 Final Engagement

Types of Evaluation

Survey
Focus Groups
Eye-Tracking
Web Analytics

“

Asking people to engage in the science process for ‘engagement sake’ does not automatically lead to more effective, efficient, or responsive science research or policy outcomes

HAYWOOD, BENJAMIN AND BESLEY, JOHN C. “EDUCATION, OUTREACH, AND INCLUSIVE ENGAGEMENT: TOWARDS INTEGRATED INDICATORS OF SUCCESSFUL PROGRAM OUTCOMES IN PARTICIPATORY SCIENCE.” PUBLIC UNDERSTANDING OF SCIENCE. 0(0) 1-15, 2013.

Benefits of Stakeholder Engagement

- More likely to result in science that is used by decision-makers, target audience
- Contributes to local sustainability, particularly when federal and state dollars are uncertain





Heat Health Vulnerability Tool

ABOUT UNDERSTANDING THE TOOL SUPPORTING DOCUMENTS CATEGORY FOUR

SELECT A COUNTY
Bladen County

SELECT A MODEL
Rural

CHOOSE CURRENT DATE OR DATE IN THE PAST
August 24 2018
(Heat models valid from May through September)

CHOOSE A GRAPH OPTION
 Percent Departure from Average
 Raw Per-Capita Values

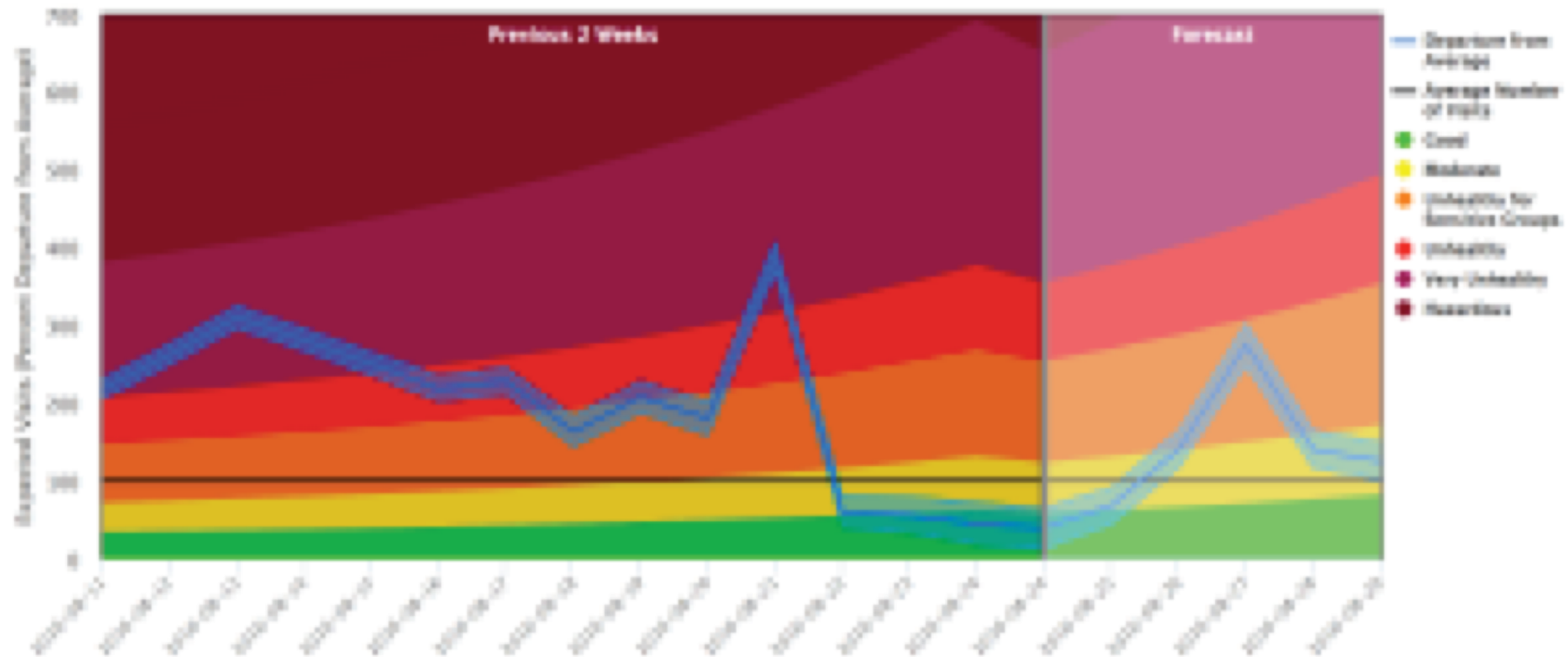
Category
 ED Visits
 ED Visits
 Minimum / Maximum

Baseline
 ED Visits

GO!

Rural Model Using Daily Maximum Heat Index For Bladen County Brown Field

Observations from 2016-08-30 through 2018-08-29
HRRS Forecast issued 2018-08-31 (SEE Heat Index used)



Convergence of Climate-Health Vulnerabilities

919.345.8764

nlm@convergence.org

1204 Halls Avenue, Chapel Hill, NC 27517

Subscribe:

nlm@convergence.org

#Heat

@SIRCC @CISA SIRCC CISA



Search this site...

ABOUT US NEWS RESEARCH TOOLS CLIMATE EXTREMES VULNERABILITY FAQ

Home / Tools / Heat-Health Vulnerability Tool (HHVT)

Heat-Health Vulnerability Tool (HHVT)

About HHVT & HRI

Understanding the Tool

Supporting Materials

Contact Us

About Vulnerability Levels

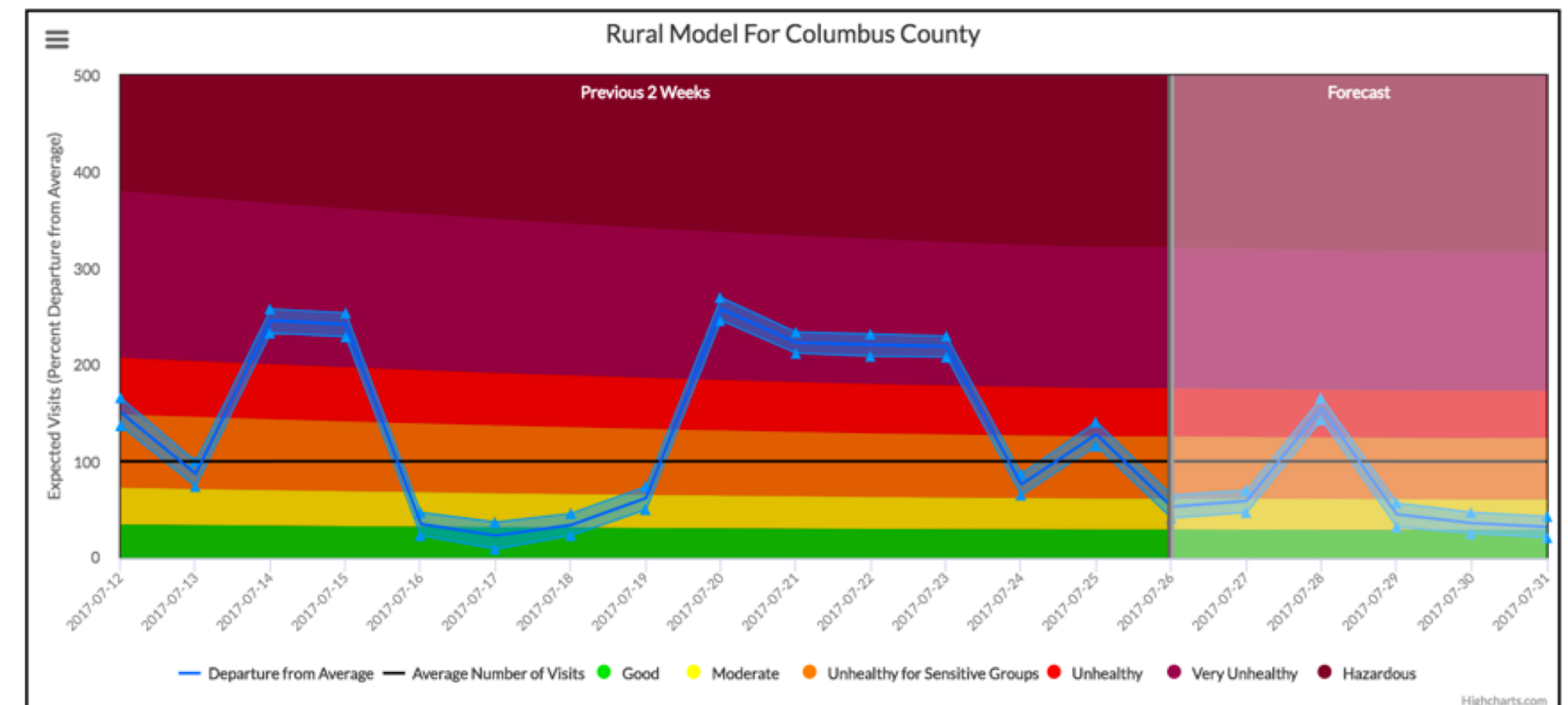
SELECT A COUNTY
Bladen County

SELECT A MODEL
Rural

CHOOSE CURRENT DATE OR DATE IN THE PAST
July 26 2017
(Heat models valid from May through September)

GO!

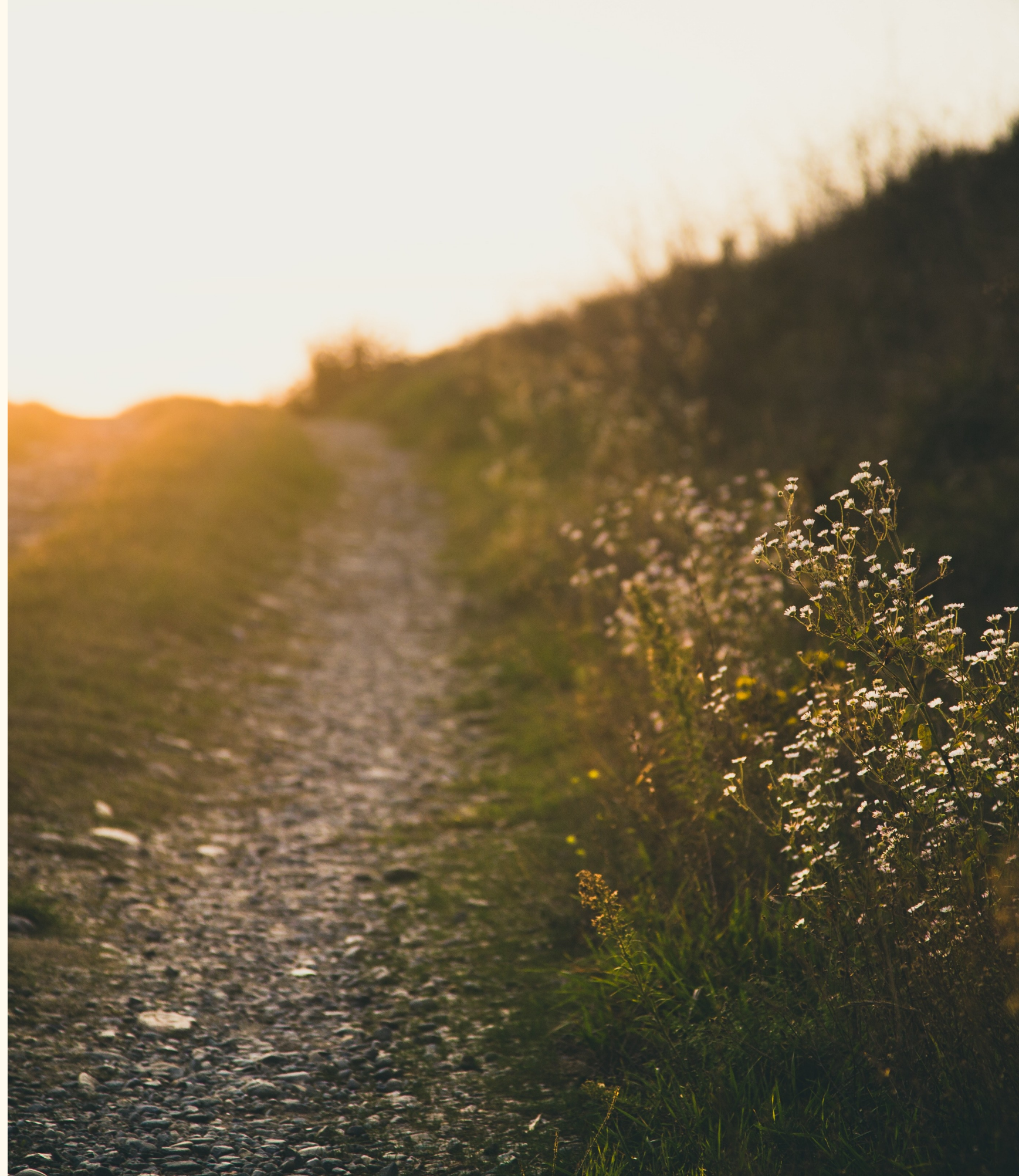
Rural Model For Columbus County



Highcharts.com

Challenges to Stakeholder Engagement

- Rural and low-resource communities
- Competing priorities limit stakeholder availability





Lessons Learned

Depth of Partnerships

Developing coalitions between federal, state, and community partners result in robust engagements with all stakeholders at the table

Rethinking Vulnerability

Vulnerable community versus asset to research
Provides opportunity to identify gaps

Integrated Evaluation

Develop interdisciplinary methods of evaluation to address each component of the process: the engagement; the product of the engagement; and the impact of both.

Variety in Engagement Types

Addresses issues of community capacity
Supports idea of sustainability