













STUDY PROTOCOL

REVISED Study protocol for an observational cohort study of

heat stress impacts in pregnancy in The Gambia, West Africa

[version 2; peer review: 2 approved, 1 approved with reservations]

Ana Bonell ^{1,2}, Leonidas G. Ioannou³, Abdul Sesay¹, Kris A. Murray^{1,2},
 Bubacarr Bah ¹, David Jeffries¹, Sophie E. Moore ^{1,4}, Ana Vicero-Cabrera^{5,6},
 Neil S Maxwell⁷, Jane E Hirst ⁸, Cally Tan², Apolline Saucy ⁶, Dorothy Watters¹,
 Bakary Sonko ¹, Emmanuel Okoh ¹, Yahaya Idris ¹,
 Williams Oluwatosin Adefila ¹, Jarra Manneh¹, Mam Leigh-Nabou¹,
 Sainabou Bojang¹, Andreas Flouris³, Andy Haines ², Andrew Prentice¹,
 Amanda N Sferruzzi-Perri⁹

¹Medical Research Council Unit The Gambia at the London School of Hygiene and Tropical Medicine, Banjul, Banjul, The Gambia²Centre on Climate Change and Planetary Health, London School of Hygiene and Tropical Medicine Faculty of Epidemiology and Population Health, London, England, UK³Department of Physical Education and Sport Science, FAME laboratory, Thessaly, Greece⁴King's College London Department of Women & Children's Health, London, England, UK⁵Institute of Social and Preventative Medicine, University of Bern, Bern, Switzerland⁶University of Bern Oeschger Centre for Climate Change Research, Bern, Canton of Bern, Switzerland⁷Environmental Extremes Laboratory, University of Brighton, Brighton, England, UK⁸The George Institute for Global Health UK, Imperial College London, London, UK, Oxford, England, UK⁹Centre for Trophoblast Research, University of Cambridge Department of Physiology Development and Neuroscience, Cambridge, England, UK

v2 First published: 28 Oct 2024, 9:624
<https://doi.org/10.12688/wellcomeopenres.23172.1>







Latest published: 07 Feb 2025, 9:624
<https://doi.org/10.12688/wellcomeopenres.23172.2>

Abstract

Climate change has resulted in an increase in heat exposure globally. There is strong evidence that this increased heat stress is associated with poor maternal and fetal outcomes, especially in vulnerable populations. However, there remains poor understanding of the biological pathways and mechanisms involved in the impact of heat in pregnancy. This observational cohort study of 764 pregnant participants based in sub-Saharan Africa, a geographical region at risk of extreme heat events, aims to evaluate the physiological and biochemical changes that occur in pregnancy due to heat stress. The key objectives of the study are to 1) map exposure to heat stress in the cohort and understand what environmental, social and community factors increase the risk of extreme heat exposure; 2) assess the impact of heat stress on maternal health, e.g. heat strain,

Open Peer Review

Approval Status   

	1	2	3
version 2 (revision) 07 Feb 2025	 view		
			
version 1 28 Oct 2024	 view	 view	 view
1. Caitlin Wyrwoll , The University of Western Australia, Crawley, Australia			
2. Pam Factor-Litvak  , Columbia University,, New York, USA			

subjective psychological well-being, sleep and activity level; 3) evaluate how heat stress impacts placenta structure and function; 4) determine how chronic heat exposure impacts birth outcomes; and 5) explore the epigenetic changes in the placenta and infant by heat stress exposure per trimester.

Pregnant women will be recruited from two distinct regions in The Gambia to exploit the naturally occurring heat gradient across the country. Microclimate mapping of the area of recruitment will give detailed exposure measurements. Participants will be asked to wear a watch-style device at 28- and 35-weeks gestational age to evaluate maternal heart rate, activity and sleep. At the end of the week, an ultrasound scan will be performed to evaluate fetal size and placental blood flow. At delivery, birth outcomes will be recorded and maternal, placental and cord samples taken for epigenetic, biochemical and histological evaluation. Evaluation of neuro-behaviour and final infant samples will be taken at 1 month following birth.

Plain language summary

Climate change has increased global temperatures. Women exposed to heat during their pregnancy have an increased risk of poor maternal and pregnancy outcomes including preterm birth and stillbirth. However, there is a poor understanding of the biological pathways that result in these poor outcomes when pregnant women are exposed to heat. This study will follow 764 pregnant women in two sites in The Gambia, West Africa - an area that is particularly at risk of heat waves and other extreme weather events. The study aims to understand or determine the following: the heat exposure pregnant women are being exposed to; the impact of heat stress on pregnant women; the impact of heat stress on the placenta; the impact of heat stress on birth outcomes; the epigenetic changes in the placenta and/or infant related to the heat stress exposure.

This observational study will recruit from two sites - cool coast and hot interior. Pregnant women will be closely followed up during the course of their pregnancy with regular ultrasound scans, questionnaires and both physiology and environmental monitoring. At delivery, birth data will be collected as well as samples from the placenta and cord blood. The final visit will be conducted at 1 month where the baby will be assessed for feeding, growth, sleep and neuro-behaviour and final samples taken.

Keywords

heat, heat stress, pregnancy, fetal, infant, birth outcomes, physiology, placenta, climate change

3. **Zhiwei Xu**, Griffith University, Gold Coast, Australia

Any reports and responses or comments on the article can be found at the end of the article.

Corresponding author: Ana Bonell (ana.bonell@shhtm.ac.uk)

Author roles: **Bonell A:** Conceptualization, Funding Acquisition, Writing – Original Draft Preparation; **G. Ioannou L:** Conceptualization, Methodology, Writing – Review & Editing; **Sesay A:** Validation, Writing – Review & Editing; **A. Murray K:** Conceptualization, Funding Acquisition, Writing – Review & Editing; **Bah B:** Funding Acquisition, Methodology, Writing – Review & Editing; **Jeffries D:** Methodology; **E. Moore S:** Methodology, Writing – Review & Editing; **Vicero-Cabrera A:** Methodology, Writing – Review & Editing; **S Maxwell N:** Conceptualization, Methodology, Writing – Review & Editing; **E Hirst J:** Conceptualization, Funding Acquisition, Writing – Review & Editing; **Tan C:** Investigation, Methodology; **Saucy A:** Methodology, Writing – Review & Editing; **Watters D:** Data Curation, Writing – Review & Editing; **Sonko B:** Data Curation, Software; **Okoh E:** Investigation, Resources; **Idris Y:** Investigation, Project Administration; **Oluwatosin Adefila W:** Data Curation, Project Administration; **Manneh J:** Investigation, Validation; **Leigh-Nabou M:** Investigation, Resources; **Bojang S:** Investigation, Project Administration; **Flouris A:** Conceptualization, Funding Acquisition, Methodology, Writing – Review & Editing; **Haines A:** Conceptualization, Funding Acquisition, Writing – Review & Editing; **Prentice A:** Conceptualization, Funding Acquisition, Writing – Review & Editing; **N Sferruzzi-Perri A:** Conceptualization, Funding Acquisition, Writing – Review & Editing

Competing interests: No competing interests were disclosed.

Grant information: This work was supported by Wellcome [227176/Z/23/Z].

The funders had no role in study design, data collection and analysis, decision to publish, or preparation of the manuscript.

Copyright: © 2025 Bonell A *et al.* This is an open access article distributed under the terms of the [Creative Commons Attribution License](https://creativecommons.org/licenses/by/4.0/), which permits unrestricted use, distribution, and reproduction in any medium, provided the original work is properly cited.

How to cite this article: Bonell A, G. Ioannou L, Sesay A *et al.* **Study protocol for an observational cohort study of heat stress impacts in pregnancy in The Gambia, West Africa [version 2; peer review: 2 approved, 1 approved with reservations]** Wellcome Open Research 2025, 9:624 <https://doi.org/10.12688/wellcomeopenres.23172.2>

First published: 28 Oct 2024, 9:624 <https://doi.org/10.12688/wellcomeopenres.23172.1>

REVISED Amendments from Version 1

The new version clarifies details on standardized questionnaires, devices used, data collection from the devices and the analysis plans for both the main study and the sub-study.

Any further responses from the reviewers can be found at the end of the article

Introduction

Anthropogenic climate change has resulted in an increased risk of exposure to heat stress and extreme heat globally, but in particular to those people living in tropical and sub-tropical regions¹. Existing evidence shows that heat stress impacts both maternal and fetal health, with increased risk of pre-eclampsia², gestational diabetes³, severe maternal morbidity⁴, congenital abnormalities⁵, miscarriage, stillbirth⁶, preterm birth⁷, low birth weight⁸, and premature rupture of membranes⁹, in those exposed to high heat stress versus no heat stress in pregnancy. Heat stress is defined as the environmental conditions (air temperature, humidity, solar radiation, wind speed) combined with the metabolic heat load and may result in heat strain, the physiological response to that heat stress and eventually in heat stroke, a potentially fatal condition. Although there is no consensus definition for extreme heat or heat waves, the most common definition is maximum temperatures exceeding the 95th percentile for that region.

West Africa is a particularly vulnerable region to the impacts of climate change, with the compounding risks of extreme heat, food insecurity, vector-borne diseases, and water scarcity/flooding¹⁰. In addition, half of agricultural workers are women, and many work during pregnancy¹¹. They perform much of the subsistence farm-work and many strenuous manual tasks throughout pregnancy. Previous studies have found that pregnant women struggle with physical symptoms, physiological heat strain, intensity of physical activity, and have few options for adaptation when working in the heat^{12,13}. In addition, there is clear evidence that air pollution worsens the adverse effects of extreme heat and it is likely other environmental factors may also play a role^{14,15}.

Understanding the effects of heat may help determine the underlying physiological processes prior to trialling tailored interventions.

Temperature regulation – considerations in pregnancy

Humans are homeothermic mammals and thermoregulation is one of the most basic homeostatic feedback loops, resulting in a core body temperature within a tightly controlled range around 37.0°C^{16,17}. Heat balance is achieved by heat gain, from both internal (metabolic) and external (environmental) sources equalling heat losses. Thermal loss is dependent on both behavioural and physiological mechanisms. Behavioural change choices are extensive (such as seeking shade), although these may be limited in certain settings (e.g. occupational heat exposure), whereas physiological mechanisms to lose heat are limited to three; diversion of blood to the skin to increase radiative and convective heat loss, sweating to enable

evaporative heat loss, and hyperventilation to increase respiratory heat loss¹⁷. Maternal hyperthermia increases the risk of abnormal embryonic and fetal development¹⁸. There are multiple physiological changes that occur during a human pregnancy that could affect thermoregulation. Cardiac output and plasma volume increase by up to 50% by the third trimester and dilutional anaemia occurs¹⁹. It is thought that the increase in basal metabolic rate as pregnancy progresses, along with the decrease in body mass to surface area ratio both reduce the ability to lose heat. However this appears to be balanced by an overall lowering of the sweat threshold (therefore sweating occurs at lower environmental heat exposures) and by the decrease in core temperature that occurs as pregnancy progresses²⁰.

Although there remains some uncertainty as to the effectiveness of thermoregulation in pregnancy²¹, recent studies have shown that thermal homeostasis is no more challenging in pregnancy than when not pregnant within usual environmental heat exposure^{20,22,23}. However, as discussed below there are several potential pathways implicated in the association between heat exposure and adverse birth outcomes, with maternal hyperthermia only being one of them.

Potential pathophysiological pathways

Both short-term/acute (up to 4 weeks) and long-term/chronic (whole pregnancy) heat exposure adversely affects pregnancy outcomes and it is likely that the mechanistic pathways overlap but may not be exactly the same. Based on current available evidence in the literature^{8,13,18,24–28}, the pathways are visualized in [Figure 1](#).

Despite these mechanisms being plausible from a theoretical and animal physiological understanding, detailed studies in humans are missing to provide definitive evidence^{20,29}.

Hypotheses

We hypothesize that pregnant women exposed to higher levels of ambient heat stress in pregnancy will experience higher levels of maternal heat strain, poorer sleep, changes in placental blood flow (detectable in vivo through alterations in the ultrasound Doppler of the umbilical arteries), structural and transcriptomic changes to the placenta and differences in birth and neonatal outcomes. We propose that there will be a differential impact depending on the gestational age at which exposure occurs. We hypothesize that pregnant women exposed to high heat stress in pregnancy will have detectable alterations in placental structure, gene expression and functional capacity. We also hypothesize that as pregnancy progresses, heat stress impacts on the maternal physiology will increase, as will the detrimental effects on sleep and well-being. These differential effects, if found, will enable gestational-age-specific intervention development to improve pregnancy outcomes for mother and child.

Research aims

This project aims to determine the physiological and biochemical changes that occur in pregnancy due to heat stress and how these impact maternal, fetal and newborn health and well-being. The specific research questions and linked study objectives are outlined below.

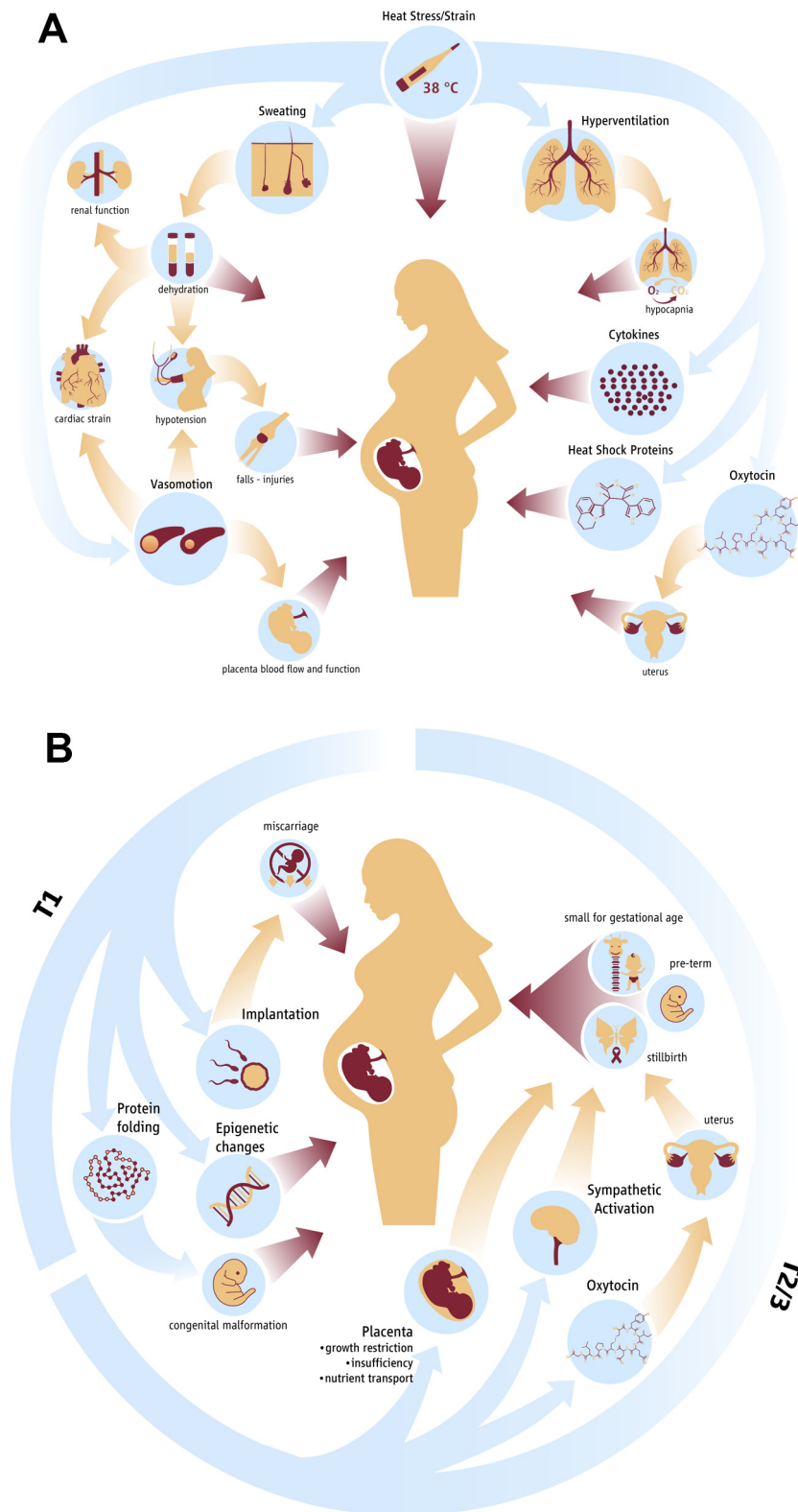


Figure 1. Hypothesised physiological pathways in acute (**1A**) and chronic (**1B**) heat stress exposure during pregnancy. **1A:** Acute effect of heat strain on fetal health and development. Blue arrows indicate the effects of heat strain on physiological mechanisms and biological markers. Yellow arrows indicate indirect effects of heat strain on physiology. Red arrows indicate direct effect of a parameter on fetal health and development. **1B:** Chronic effect of heat stress on maternal and fetal physiology and subsequent adverse outcomes.

Research questions and objectives

Exposure

- What is the ambient heat stress exposure of pregnant women in coastal and inland Gambia?
 - *Derive high-resolution, spatiotemporal heat stress maps of the residential area of all study participants to determine heat stress exposure in pregnancy.*
- What factors influence the temporal and spatial distribution of heat stress?
 - *Identify areas in the study region most affected by heat stress and the potential relationship with geographic, topographic and ecological features, including proximity to water, vegetation and housing type.*
- Does air pollution and noise pollution exposure vary with heat exposure in urban and rural settings?
 - *Derive spatiotemporal maps of air pollution exposure through static outdoor devices and an ad hoc monitoring campaign of indoor air and noise pollution on a sub-set of participants.*

Maternal impacts

- What is the level of physiological heat strain experienced by pregnant women in coastal and inland Gambia throughout the year?
 - *Estimate physiological heat strain in pregnancy and how it varies by gestational age and other maternal, socio-economic and environmental factors.*
- What impact does ambient heat stress have on secondary outcomes (activity level, well-being, sleep quality, food security and food intake)?
 - *Determine the acute and chronic impact of heat stress on maternal activity level, well-being, sleep quality and food security, and how these vary with gestational age, maternal and socioeconomic factors.*
- How does acute and chronic heat stress exposure affect levels of maternal circulating placental hormone and inflammatory cytokine levels during pregnancy?
 - *Estimate changes in circulating placental hormone levels and inflammatory markers at 28 week gestation by measured heat stress and heat strain exposure.*

Placental impacts

- How does heat stress affect the materno-placental interface and what is the relationship between heat exposure and utero-placental blood flow and function?
 - *Determine the acute and chronic impact of heat stress on materno-placental blood flow, placental structure, vascular density and function.*

- Which genes and pathways are affected in the placenta by heat stress exposure?
- *Determine the differentially expressed genes and altered signalling pathways in the placenta in pregnancies exposed to differing levels of heat stress by trimester.*

Birth and neonatal outcomes

- How does maternal exposure to heat stress effect birth outcomes, such as small-for-gestational age, gestational-age-adjusted birth weight, gestational-age-adjusted birth length and gestational-age-adjusted head circumference, stillbirth and gestational length?
 - *Determine the effect of acute and chronic heat stress exposure by trimester on birth outcomes related to intra-uterine growth restriction.*
 - *Determine the effect of acute and chronic heat stress exposure on risk of stillbirth.*
 - *Determine the effect of acute and chronic heat stress exposure on gestational length.*
- How does maternal exposure to heat stress during pregnancy influence neonatal neuro-behavioural and neurological status?
 - *Determine whether maternal heat stress exposure by trimester is associated with differences in Neuro-Behavioural Assessment Scale (NBAS) assessment within 28 days of birth.*
- Which genes and pathways are altered in infant samples by heat stress exposure?
 - *Determine the differentially expressed genes and altered signalling pathways in infant blood samples (at 28 days) in pregnancies exposed to differing levels of heat stress by trimester.*

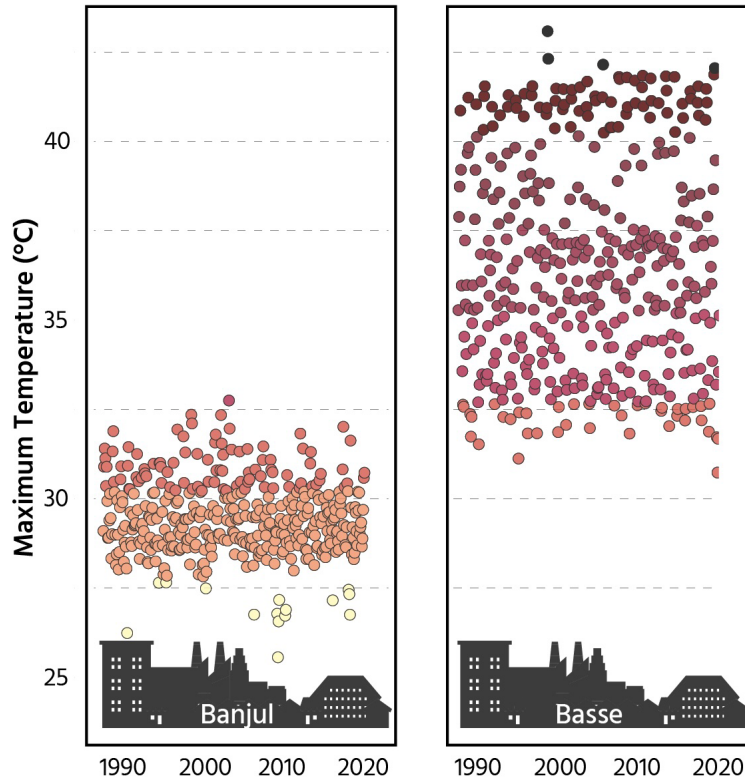
Methods

Study design

We will conduct a prospective observational cohort study of pregnant women who live in two contrasting regions of The Gambia - Brikama in West Coast Region (coastal region) and in and around Basse in Upper River Region (inland region).

This will utilize the temperature gradient that occurs within The Gambia as visualized in [Figure 2](#) and include participants from both urban and rural areas. We will collect regular data on the main drivers of seasonal differences in birth outcomes in order to disentangle the impact of heat stress from other seasonal drivers, for example food security and infectious disease episodes which may both be climatically influenced.

Prior to recruitment of participants, we will set-up stationary heat stress meters (Kestrel® 5400 Heat Stress Monitor, produced by Nielsen-Kellerman Company, USA) that will act as weather stations for the study^{30,31}. In addition, we will use stationary low-cost heat and humidity sensors (Kestrel Drop D2)



Average monthly maximum temperature from the closest weather stations to recruitment areas across The Gambia in the last 40 years

Figure 2. Maximum monthly temperatures for coastal and inland regions.

to build a micro-climate map of the region the study participants live in. To ensure other potential environmental confounders are accounted for, we will also utilize stationary air pollution monitors (IQAir™) in the geographical region, as well as additional ad hoc monitoring to measure personalized noise and air pollution in a sub-set of participants (details below).

Sample size

The study has multiple outcomes of interest related to heat stress exposure. Sample size calculations have been based on preliminary data in The Gambia or data from published research. However, certain outcomes have minimal data available to estimate an effect of heat (e.g. comparison of mean circulating placental hormones in those exposed to heat versus not exposed) and therefore we assume the largest estimate of sample size will be sufficient to detect meaningful differences in these outcomes. Please see [Table 1](#) for full details.

Due to fetal loss and loss to follow-up, we increased our final sample size to 764 to meet sample size requirements for all outcomes.

Study population and selection criteria

Participants will be pregnant women who attend government-run health care facilities for antenatal care based at or out of Basse or Brikama hospitals. A community sensitization programme will be undertaken to discuss the study with the community leaders, community members, pregnant women, local healthcare workers and any interested members of the community.

Women will be identified at routine government-run antenatal clinics.

Provision of written informed consent

Trained study staff members will undertake additional sensitisation and screening prior to undertaking written informed consent. Each potential participant will be addressed in the language of their choice and will undergo individual screening interviews, be given written information on the project and have time to ask questions and discuss with family members prior to taking informed consent. Informed consent will be taken in the presence of an impartial witness and if the participant is

Table 1. Summary of sample size calculations for key outcomes.

Outcome	Heat strain	Sleep	Birth outcome (any adverse pregnancy outcome)	Birth outcome (small for gestational age)
Model	Repeated measures ANOVA	Repeated measures ANOVA	Logistic regression	Linear regression
Number of groups	2	2	2	-
Number of measurements	240	10	-	-
Effect size	0.15	0.2	2.2*	0.14
Predictors	-	-		5
Significance	0.05	0.05	0.05	0.05
Power	80%	80%	80%	80%
Number needed	702	396	324	661

*Assumed relative risk (based on Rekha *et al.*³²)

unable to write, her fingerprint will be used as substitute for a signature. Participants may withdraw consent at any time during the course of the study without any impact on future care provision.

Study staff will then screen the women and enrol them if all the criteria listed below are fulfilled. Gestational age will be confirmed by ultrasound scan using the V-scan air and based on crown-rump-length if <13 weeks gestation, or a combination of bi-parietal diameter, head circumference, abdominal circumference and femur length if between 13 weeks and 26 weeks gestation.

Pregnant women of 18 years and above, of any parity or gravida, will be eligible for enrolment. Participants will be recruited if they fulfil all of the following inclusion criteria:

1. Confirmed pregnancy with a single fetus.
2. Less than 26 weeks gestation (confirmed by ultrasound scan).
3. Live and work within the region and plan to stay in the region for the entire pregnancy and delivery.
4. Not currently in any condition that would require immediate medical attention, e.g. fever, abdominal pains, vaginal bleeding.
5. Willingness and ability to provide demographic and clinical information, clinical samples, including placental samples and wear a non-invasive portable device for continuous physiological monitoring.

Those diagnosed with HIV infection will be excluded.

Study procedures

Routine antenatal care will be provided by the government-run health clinic as per standard treatment. Study-specific

activities will be conducted by personnel hired for the purpose of the research study, and will include research clinicians, nurse/midwives, field workers, project manager, laboratory staff and data manager.

Study staff will be trained in the protocol and relevant study procedures as visualised in [Figure 3](#), prior to the start of the study. All approvals will be in place prior to commencement of the study and the study team will liaise closely with the hospital staff to ensure full communication within the facilities.

Study activities and data collection at enrolment

During enrolment of each participant, study staff will collect basic demographic data (age, place of residence, type of housing, sanitation, cooking practices, noise annoyance, ethnicity, employment), obstetric history (including number of pregnancies, outcomes of those pregnancies, previous pregnancy related complications), current and past medical history (including disabilities), and current medication (including anti-malarial prophylaxis and micronutrient supplementation).

At the initial visit, study staff will also perform basic anthropometric measurements: height, weight and mid-upper arm circumference. A simple clinical examination will follow to include measurement of blood pressure with a digital device, heart rate, respiratory rate, tympanic temperature, and uterine fundal height. Point-of-care tests for haemoglobin and random glucose concentrations, a dried blood spot for diagnostic tests for malaria, and urine analysis for presence of protein, leukocytes and blood will be carried out.

Monthly questionnaire

When participants reach 26 weeks gestational age, they will be visited monthly by the study team to administer a short questionnaire. This will include questions on recent illness (e.g. recent infections and medication use), the WHO-5

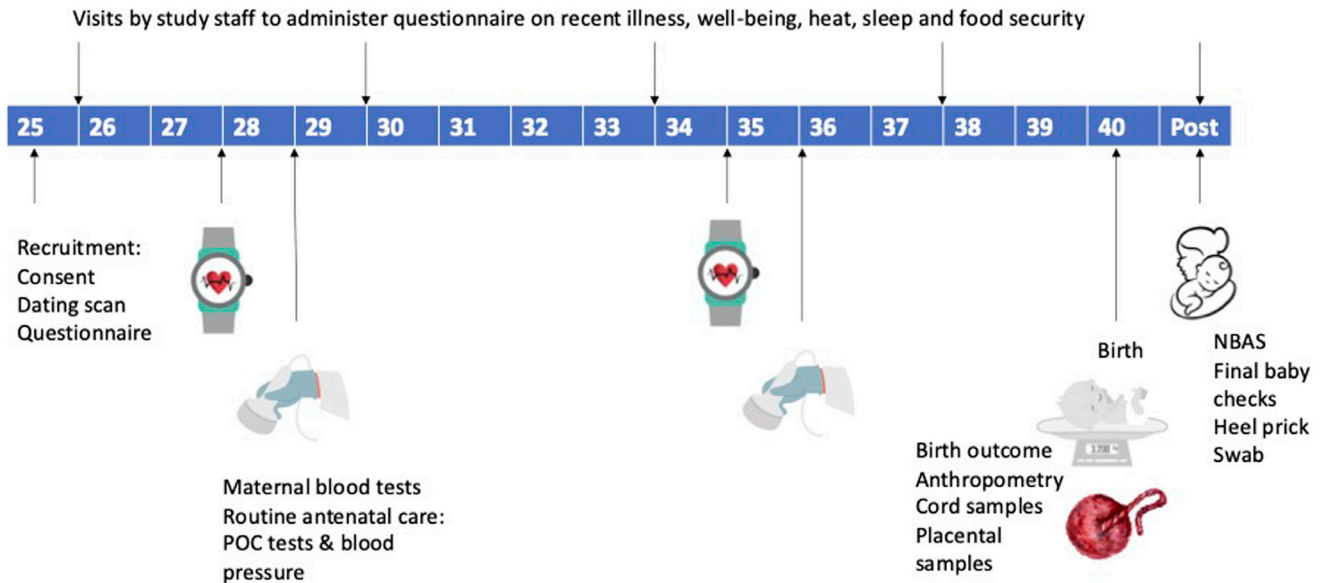


Figure 3. Study processes according to gestational age of participant pregnancy. POC = point-of-care tests (hemoglobin, blood glucose, urine analysis, dried blood spot for malaria PCR). NBAS = neonatal-behavioural assessment scale.

well-being Index assessment, subjective sleep disturbance using the PROMIS sleep disturbance form, food insecurity using the Food Insecurity Experience Scale from FAO and water insecurity using the abridged Water Insecurity Experience Scales.

Study activities at 28 and 35 weeks of gestation

Each participant will be visited at their home by the field team and fitted with a wearable tracker device (Garmin vivosmart5™) that will be placed on the wrist of their dominant hand according to a standard operating procedure. This device will monitor heart rate, activity (steps and distance) and sleep. Once fitted, the participants will continue to perform their usual routine activities and will wear the device continuously for the next five days. All participants will be given a small portable device (Kestrel D2 drop) to measure temperature and humidity to attach to their clothing and wear in addition to the watch device. This will measure direct, localized environmental exposure for the week including information on indoor heat exposure.

In a random subset of participants, we will collect additional information on their environmental exposure and in-depth details on their daily activities and food and water intake. For the environmental monitoring, we will utilize small, portable indoor air pollution monitors to be placed in their homes and noise sensors to be placed outside their home on the facades by their bedrooms. During the course of their monitoring week they will be visited by field staff who will complete a task diary of their activities from 8am–6pm.

During the five days, participants will be visited regularly to ensure compliance with wearing the devices, check battery status of the devices, and administer the monthly questionnaire should this fall on the same week.

At the end of the five days every participant will undergo an ultrasound scan. This will include fetal growth parameters, fetal heart rate, placenta location, volume of amniotic fluid, and if available a Doppler examination of the umbilical artery. Point-of-care tests to include haemoglobin, glucose, dried-blood spot for malaria PCR and urine analysis, as well as blood pressure and basic clinical assessment will be carried out. Additionally, all participants will have a blood sample taken at the completion of the 28 week visit to test for circulating placental hormones and inflammatory markers at a later date.

At delivery

Participants or midwives at the facilities will inform the study team when labour is established. Participants will be brought to the health facility by the study car (if they wish) and attended by government staff during the intrapartum period. Study staff will be present to collect data on duration of labour, medication given during labour, mode of delivery, complications of delivery, birth outcome and apgar score. Placental samples and cord blood will be taken within 30 mins of delivery of the placenta as detailed below. Neonatal anthropometric measurements will be taken at birth, to include birth weight, birth length, head circumference and infant sex, as well as a final maternal blood sample. On the occasion where participants deliver outside of the study hospital or the study team are unable to

attend the birth, neonatal anthropometry will be collected up to 72 hours of birth and otherwise will be coded as missing.

Placenta sampling

Each placenta will undergo gross examination and placental parameters, including placental weight, disc dimensions (length, weight and depth) and membrane features will be recorded including a photograph. Four samples will be taken from the maternal-facing portion of the placenta using a standardized biopsy quadrant method which takes into account the cord insertion site and is able to overcome heterogeneity in placental morphology and gene expression³³. These four samples will be taken mid-way from the cord insertion site to the peripheral edge of the placenta. Each 2cm cube biopsy from each quadrant will have ~0.5cm trimmed from the maternal facing edge and then will be divided into 3 equal parts that are either: 1) immediately snap frozen (all 4 quadrants snap frozen first); 2) put into RNA-later and then fixative; 3) and immediately fixed in paraformaldehyde for later molecular analyses³⁴.

Neonatal-Behavioral Assessment Scale

Designated members of the study team will undergo training and certification in performing the neonatal-behavioral assessment scale (NBAS), organised by the Brazelton Centre UK. Each newborn will be assessed once at around 28 days using the NBAS Brazelton scale which includes 28 behavioral and 18 reflex responses. This assessment will be completed at the participant's home or the clinic, in a quiet and safe place, mid-way between feeds. Assessment usually takes 20–30 minutes and is an interactive assessment covering how the baby responds to light and sound when asleep and how they follow faces and objects when awake.

Final assessments

A final visit will occur when the infant is around 28 days old. Study staff members will perform a final clinical assessment and take two samples: a dried blood spot for infant molecular analyses. This will signify the end of the study for the participant.

Laboratory processes

Sample collection and processing

Trained study staff will collect a 14ml venous blood sample from every participant at the completion of 28 weeks gestation. The sample will be collected directly into the vacutainer tubes using the blood containing kit provided.

After delivery, every participant, where possible will have maternal blood, cord blood and placenta samples taken by a trained midwife or research clinician. These samples will be taken within 30 mins of the placenta being delivered. 13mLs of cord blood will be collected from the fetal vein to study whether metabolic substrates, hormones or cytokines levels released from the mother via the placenta may contribute to poor pregnancy outcomes in those exposed to heat stress.

Sample storage

Whole blood samples from each participant will be used to prepare dried blood spots (DBS) of 10µl each on filter paper

and stored for malaria PCR. Infant DBS at 28 days of life will also be collected onto filter paper and stored for later epigenetic analysis. Serum, plasma and a red blood cell pellet will be separated and stored at -80°C for both maternal and cord blood.

Sample shipment

Samples will be shipped to University of Cambridge following MRCG@LSHTM SOPs in place. Where possible, samples will be shipped at standard temperature, but where necessary samples requiring -80°C will be shipped on dry ice. The samples shipped will be a subset of the full cohort and will be identified prior to shipping through environmental and clinical factors.

Specific laboratory assessments

All laboratory protocols will be described in study specific SOPs.

Maternal blood at 28 weeks gestation will be assessed for the following maternal circulating placental hormones and inflammatory cytokine levels: pregnancy-associated plasma protein-A (PAPP-A), placenta growth factor (PLGF), tumour necrosis factor alpha (TNF alpha) and interleukin-6 (IL-6). As this is an area of rapidly growing interest, other relevant biomarkers may be identified which we would test on the maternal and cord blood (budget allowing).

Placenta examination: placental histology examination by robust unbiased stereology will include evaluation of villi density and maturation, syncytial knots, fibrosis, trophoblast, stroma, fetal capillaries, surface area and barrier to diffusion^{33,34}. For the gene expression analysis, following RNA extraction, placental and infant samples will be analysed by RNA-sequencing to identify the genes which are differentially expressed with heat stress/strain. We will use gene ontology and pathway analyses (e.g. REVIGO, STRING and KEGG) to identify the cellular functions and signalling pathways that are enriched in the gene set that is differentially-expressed.

Safety considerations

Risks associated directly with participating in this study are minimal. Participants will be identified when they attend the government-run antenatal services, and they will remain under the care of the free government service. In addition, they will be seen by study staff who will consist of trained nurse-midwives and research clinicians. At study visits, study staff will supplement the general antenatal care to ensure screening for anaemia, hypertension, proteinuria and urinary tract infections are completed. In addition, the study will cover the costs of any medication requirements for participants where these are not freely available by the government. Should at any time a participant fall unwell during the study period, they will have access to contact details for a study midwife who will arrange medical review and treatment if needed. Should the study midwife have any medical concerns that they feel they are unable to meet, then the government approved obstetric consultant will be contacted for clinical advice and the participant transferred/treated accordingly. Advice will also be sought when complications on ultrasound scan are identified, and transfer arranged as necessary.

At the time of commencement of labour, participants will be transferred to the hospital in a study vehicle if needed and study staff members will be present, although the participant will be under the care of the government-run facility.

Data management

Data quality assurance and monitoring

All study staff will be GCP certified and trained on the study protocol prior to the start of study activities. Data collection forms will be reviewed by the study coordinator and Principal Investigator (PI) for completeness. Regular meetings will be held with the study staff to discuss progress and any problems. Standardised protocols and SOPs will be followed to ensure quality control.

Records

All participants will be allocated a unique identifying number at recruitment. Data generated by the Garmin devices will be downloaded from the devices using a custom-developed Application Programming Interface at the end of the 5–7 days of wearing the device, linked to the unique identifying number and then reset. During the study, data will be collected on tablets using REDCap (Research Data Application Capture <https://projectredcap.org/software/>). Tablets will be synced at the field stations where stable internet connection allows transfer of encrypted data to the designated server.

All data will be backed up regularly by the IT department in accordance with MRCG@LSHTM standard protocols. The database is centrally stored, data is secure and encrypted. No personal identifiable information will be available in any shared or published document. Primary data outputs will be in csv format.

Immediate and long-term use of the data

Data collected in the study will be analysed and prepared for publication in open-access peer-reviewed journals. We will comply with international standards and guidelines regarding open access of research data. Anonymized datasets will be made available on public open access sites (e.g. LSHTM's datacompass) within two years of the completion of all aspects of the study. All study documents will be filed on secure, encrypted servers and stored for at least 10 years, in keeping with standard MRCG protocols.

Data analysis and statistical considerations

Accurately assign exposure

For heat stress exposure we will develop spatiotemporal statistical models. We will utilise machine learning to predict a set of heat stress indices to develop a 50×50-meter cell of the study area. The individual heat stress monitors worn by participants at 28 and 35 weeks of gestational age will be used as the ground truth or predictor variable. This will be used during model training to make predictions for the cohort of individual heat stress exposure throughout pregnancy. Stationary monitors, local weather station data, global gridded climate data sets and satellite imagery will be the target variables. The model

will include additional environmental variables, such as, but not exclusively: Normalised Difference Vegetation Index (NDVI), land surface temperature, WBGT, UTCI. The model will be validated using a train and test split. We will then assess the spatial and temporal variation of each weather variable across the study region through maps and thermal drone imagery and identify high-risk neighbourhoods and contextual variables associated with high-low exposure and periods of years with higher/lower heat/heat stress or better/worse thermal comfort. Air pollution will be assigned from the stationary monitors which give hourly rolling average concentrations of PM1, PM2.5, PM 10 and AQI for the study regions.

Sub-study details

In 60 participants we will estimate indoor air pollution and noise pollution. In addition to air pollution, residents of urban environments are often exposed to higher noise levels, which have shown to detrimentally affect sleep and brain function^{35,36}. These participants will be randomly selected from those due their 28 or 35 week visit and will have additional monitors placed at their home. The Smart Citizen Kit 2.3™ will be used to monitor air pollution in the cooking area and the NSRT_mk4™ will be placed outside the bedroom window to monitor noise exposure. This subset of data will be analysed independently to the main study to give insights into the interaction between noise, indoor air pollution and heat exposure with maternal physiological measurements in this setting.

Maternal physiology

Physiological heat strain will be defined using information from the wearable devices. We will measure the level of physiological heat strain through the estimation of the physiological strain index (PSI). It is a widely accepted metric for assessing physiological heat strain that goes from 0 (no strain) to 10 (very high strain). We will not have access to measured core temperature in our participants and therefore will use validated algorithms to compute heat strain from the non-invasive wearable device data³⁷. We will also evaluate physiological heat strain based on reported heat strain symptoms collected by field staff. We will apply the case time series design and perform linear, non-linear, and logistic mixed models to assess the association between exposure to heat and heat stress and both physiological heat strain and sleep quality as determined from the wearable devices. We will assess if the association was different according to baseline characteristics and gestational age through stratified analyses and interaction terms.

Materno-placental blood flow

Materno-placental blood flow will be determined by the umbilical artery resistance index (a measure of umbilical artery blood velocity). This varies by gestational age and therefore the gestational-age adjusted z-score will be calculated and used in the analysis. The effect of acute heat exposure on the umbilical artery z-score will be assessed using a mixed

model, non-linear regression model, with heat exposure defined by heat and heat stress in the preceding week (from the directly observed measurements) and including important covariates such as air pollution exposure and maternal heat strain (from the wearable device). Chronic heat stress on umbilical blood flow will be assessed by assigning heat stress exposure during the entire pregnancy to date.

Pregnancy outcomes

Pregnancy exposure by trimester will be used to evaluate the impact of heat in pregnancy on birth outcomes, structural and transcriptomic changes in the placenta, and neonatal neurocognitive behavioural, molecular and microbiome changes. Birth outcomes will include fetal loss, preterm birth, low birth weight, small-for-gestational age and birth anthropometry adjusted for gestational age. The INTERGROWTH-21 reference will be used as reference and to determine gestational-age appropriate z-scores³⁸. Linear, non-linear, non-linear distributed lag models and logistic regression models will be used for these analyses.

Quality assurance

Quality control of all study procedures will be assured by conducting all study procedures according to SOPs. An advisory monitoring board will be appointed and will meet regularly to assess progress, data reports and participant safety considerations.

Expected outcomes of the study

This study will give valuable information on heat exposure of pregnant Gambian women, their physiological responses, placental function, sleep quality, birth outcomes and assessment of newborn neuro-behavior. This information can be directly utilized to develop interventions (i.e. identification of at risk individuals or exposure thresholds) and to evaluate interventions and adaptations to reduce heat exposure health impacts in pregnancy.

Dissemination of results and publication policy

A high degree of community engagement is essential for this project to work. The community leaders will be invited to consider and discuss the project prior to commencement. At the end of the project a community event will be held to disseminate results to all those communities that participated in the study.

The advisory board will provide advice and oversight to help disseminate our findings to generate impactful outcomes. The results from the study will be prepared for publication in open access peer-reviewed journals as soon as possible on completion of the study. Results will also be presented at local and international conferences, public webinars, to key government organisations (e.g. Ministry of Health and Ministry of Environment) and at international events (such as COP).

Ethics and consent

This study follows the international ethical codes as set out in the Declaration of Helsinki (<https://www.wma.net/policies-post/wma-declaration-of-helsinki-ethical-principles-for-medical-research-involving-human-subjects/>). The study was reviewed and approved by the Gambian Government/Medical Research Council ethics committee (on the 19th Jan 2024) and by the London School of Hygiene and Tropical Medicine ethics committee (on the 30th Jan 2024; approval number: 29917). We also received approval from the Ministry of Health, Republic of the Gambia to undertake this study on the 8th March 2024. Written informed consent will be obtained from all participants. Participants will be identified by unique identification numbers in all data collection forms and databases. No identifiable data will be shared or published. Data is securely stored on MRCG/LSHTM servers and all data is held by MRCG/LSHTM.

Data availability

No data are associated with this article.

References

1. IPCC: **Global warming of 1.5°C. An IPCC special report on the impacts of global warming of 1.5°C above pre-industrial levels and related global greenhouse gas emission pathways, in the context of strengthening the global response to the threat of climate change, sustainable development, and efforts to eradicate poverty.** World Meteorological Organization, 2018. [Publisher Full Text](#)
2. Shashar S, Kloog I, Erez O, *et al.*: **Temperature and preeclampsia: epidemiological evidence that perturbation in maternal heat homeostasis affects pregnancy outcome.** *PLoS One.* 2020; **15**(5): e0232877. [PubMed Abstract](#) | [Publisher Full Text](#) | [Free Full Text](#)
3. Booth GL, Luo J, Park AL, *et al.*: **Influence of environmental temperature on risk of gestational diabetes.** *CMAJ.* 2017; **189**(19): E682–E9. [PubMed Abstract](#) | [Publisher Full Text](#) | [Free Full Text](#)
4. Jiao A, Sun Y, Avila C, *et al.*: **Analysis of heat exposure during pregnancy and severe maternal morbidity.** *JAMA Netw Open.* 2023; **6**(9): e2332780. [PubMed Abstract](#) | [Publisher Full Text](#) | [Free Full Text](#)
5. Auger N, Fraser WD, Sauve R, *et al.*: **Risk of congenital heart defects after ambient heat exposure early in pregnancy.** *Environ Health Perspect.* 2017; **125**(1): 8–14. [PubMed Abstract](#) | [Publisher Full Text](#) | [Free Full Text](#)
6. McElroy S, Ilango S, Dimitrova A, *et al.*: **Extreme heat, preterm birth, and stillbirth: a global analysis across 14 lower-middle income countries.** *Environ Int.* 2022; **158**: 106902. [PubMed Abstract](#) | [Publisher Full Text](#)
7. Basu R, Chen H, Li DK, *et al.*: **The impact of maternal factors on the association between temperature and preterm delivery.** *Environ Res.* 2017; **154**: 109–14. [PubMed Abstract](#) | [Publisher Full Text](#) | [Free Full Text](#)
8. Wang J, Liu X, Dong M, *et al.*: **Associations of maternal ambient temperature exposures during pregnancy with the placental weight, volume and PFR: a birth cohort study in Guangzhou, China.** *Environ Int.* 2020; **139**: 105682. [PubMed Abstract](#) | [Publisher Full Text](#)

9. Yang D, Chen L, Yang Y, *et al.*: **Influence of ambient temperature and diurnal temperature variation on the premature rupture of membranes in East China: a distributed lag nonlinear time series analysis.** *Environ Res.* 2021; **202**: 111145.
[PubMed Abstract](#) | [Publisher Full Text](#)
10. Warren R, Andrews O, Brown S, *et al.*: **Quantifying risks avoided by limiting global warming to 1.5 or 2 °C above pre-industrial levels.** *Clim Change.* 2022; **172**(3): 39.
[PubMed Abstract](#) | [Publisher Full Text](#)
11. Raney G, Croppenstedt A, Gerosa S, *et al.*: **The role of women in agriculture. Agricultural development economics division.** The Food and Agriculture Organization of the United Nations, 2011.
[PubMed Abstract](#) | [Publisher Full Text](#)
12. Spencer S, Samateh T, Wabnitz K, *et al.*: **The challenges of working in the heat whilst pregnant: insights from Gambian women farmers in the face of climate change.** *Front Public Health.* 2022; **10**: 785254.
[PubMed Abstract](#) | [Publisher Full Text](#) | [Free Full Text](#)
13. Bonell A, Sonko B, Badjie J, *et al.*: **Environmental heat stress on maternal physiology and fetal blood flow in pregnant subsistence farmers in the Gambia, West Africa: an observational cohort study.** *Lancet Planet Health.* 2022; **6**(12): e968–e76.
[PubMed Abstract](#) | [Publisher Full Text](#) | [Free Full Text](#)
14. Arroyo V, Díaz J, Ortiz C, *et al.*: **Short term effect of air pollution, noise and heat waves on Preterm Births in Madrid (Spain).** *Environ Res.* 2016; **145**: 162–8.
[PubMed Abstract](#) | [Publisher Full Text](#)
15. Bekkar B, Pacheco S, Basu R, *et al.*: **Association of air pollution and heat exposure with preterm birth, low birth weight, and stillbirth in the US: a systematic review.** *JAMA Netw Open.* 2020; **3**(6): e208243.
[PubMed Abstract](#) | [Publisher Full Text](#) | [Free Full Text](#)
16. Bonell A, Hirst J, Vicedo-Cabrera AM, *et al.*: **A protocol for an observational cohort study of heat strain and its effect on fetal wellbeing in pregnant farmers in the Gambia [version 2; peer review: 2 approved].** *Wellcome Open Res.* 2020; **5**: 32.
[PubMed Abstract](#) | [Publisher Full Text](#) | [Free Full Text](#)
17. Tansey EA, Johnson CD: **Recent advances in thermoregulation.** *Adv Physiol Educ.* 2015; **39**(3): 139–48.
[PubMed Abstract](#) | [Publisher Full Text](#)
18. Edwards MJ: **Hyperthermia as a teratogen: a review of experimental studies and their clinical significance.** *Teratog Carcinog Mutagen.* 1986; **6**(6): 563–82.
[PubMed Abstract](#) | [Publisher Full Text](#)
19. Hall ME, George EM, Granger JP: **The heart during pregnancy.** *Rev Esp Cardiol.* 2011; **64**(11): 1045–50.
[PubMed Abstract](#) | [Publisher Full Text](#) | [Free Full Text](#)
20. Samuels L, Nakstad B, Roos N, *et al.*: **Physiological mechanisms of the impact of heat during pregnancy and the clinical implications: review of the evidence from an expert group meeting.** *Int J Biometeorol.* 2022; **66**(8): 1505–1513.
[PubMed Abstract](#) | [Publisher Full Text](#) | [Free Full Text](#)
21. Bonell A, Part C, Okomo U, *et al.*: **An expert review of environmental heat exposure and stillbirth in the face of climate change: clinical implications and priority issues.** *BJOG.* 2024; **131**(5): 623–631.
[PubMed Abstract](#) | [Publisher Full Text](#)
22. Smallcombe JW, Puhenthirar A, Casasola W, *et al.*: **Thermoregulation during pregnancy: a controlled trial investigating the risk of maternal hyperthermia during exercise in the heat.** *Sports Med.* 2021; **51**(12): 2655–2664.
[PubMed Abstract](#) | [Publisher Full Text](#)
23. Dervis S, Dobson KL, Nagpal TS, *et al.*: **Heat loss responses at rest and during exercise in pregnancy: a scoping review.** *J Therm Biol.* 2021; **99**: 103011.
[PubMed Abstract](#) | [Publisher Full Text](#)
24. Shankar K, Ali SA, Ruebel ML, *et al.*: **Maternal nutritional status modifies heat-associated growth restriction in women with chronic malnutrition.** *PNAS Nexus.* 2023; **2**(1): pgac309.
[PubMed Abstract](#) | [Publisher Full Text](#) | [Free Full Text](#)
25. Vähä-Eskeli K, Pirhonen J, Seppänen A, *et al.*: **Doppler flow measurement of uterine and umbilical arteries in heat stress during late pregnancy.** *Am J Perinatol.* 1991; **8**(6): 385–9.
[PubMed Abstract](#) | [Publisher Full Text](#)
26. Yates DT, Petersen JL, Schmidt TB, *et al.*: **ASAS-SSR triennial reproduction symposium: looking back and moving forward—how reproductive physiology has evolved: fetal origins of impaired muscle growth and metabolic dysfunction: lessons from the heat-stressed pregnant ewe.** *J Anim Sci.* 2018; **96**(7): 2987–3002.
[PubMed Abstract](#) | [Publisher Full Text](#) | [Free Full Text](#)
27. Dadvand P, Basagaña X, Sartini C, *et al.*: **Climate extremes and the length of gestation.** *Environ Health Perspect.* 2011; **119**(10): 1449–53.
[PubMed Abstract](#) | [Publisher Full Text](#) | [Free Full Text](#)
28. Bonell A, Vannevel V, Sonko B, *et al.*: **A feasibility study of the use of UmbiFlow™ to assess the impact of heat stress on fetoplacental blood flow in field studies.** *Int J Gynaecol Obstet.* 2023; **160**(2): 430–436.
[PubMed Abstract](#) | [Publisher Full Text](#) | [Free Full Text](#)
29. Bonell A, Ioannou LG, Hirst JE, *et al.*: **Understanding the physiological and biological response to ambient heat exposure in pregnancy: protocol for a systematic review and meta-analysis.** *BMJ Open.* 2024; **14**(7): e085314.
[PubMed Abstract](#) | [Publisher Full Text](#) | [Free Full Text](#)
30. Bailey E, Fuhrmann C, Runkle J, *et al.*: **Wearable sensors for personal temperature exposure assessments: a comparative study.** *Environ Res.* 2020; **180**: 108858.
[PubMed Abstract](#) | [Publisher Full Text](#)
31. Ioannou LG, Testa DJ, Tsoutsoubi L, *et al.*: **Migrants from low-income countries have higher heat-health risk profiles compared to native workers in Agriculture.** *J Immigr Minor Health.* 2023; **25**(4): 816–23.
[PubMed Abstract](#) | [Publisher Full Text](#) | [Free Full Text](#)
32. Rekha S, Nalini SJ, Bhuvana S, *et al.*: **Heat stress and adverse pregnancy outcome: prospective cohort study.** *BJOG.* 2024; **131**(5): 612–622.
[PubMed Abstract](#) | [Publisher Full Text](#)
33. Musa E, Salazar-Petres E, Arowolo A, *et al.*: **Obesity and gestational diabetes independently and collectively induce specific effects on placental structure, inflammation and endocrine function in a cohort of South African women.** *J Physiol.* 2023; **601**(7): 1287–306.
[PubMed Abstract](#) | [Publisher Full Text](#)
34. Yong HEJ, Maksym K, Yusoff MAB, *et al.*: **Integrated placental modelling of histology with gene expression to identify functional impact on fetal growth.** *Cells.* 2023; **12**(7): 1093.
[PubMed Abstract](#) | [Publisher Full Text](#) | [Free Full Text](#)
35. Smith MG, Cordoza M, Basner M: **Environmental noise and effects on sleep: an update to the WHO systematic review and meta-analysis.** *Environ Health Perspect.* 2022; **130**(7): 76001.
[PubMed Abstract](#) | [Publisher Full Text](#) | [Free Full Text](#)
36. Hahad O, Bayo Jimenez MT, Kuntic M, *et al.*: **Cerebral consequences of environmental noise exposure.** *Environ Int.* 2022; **165**: 107306.
[PubMed Abstract](#) | [Publisher Full Text](#)
37. Ioannou LG, Ciuha U, Fisher JT, *et al.*: **Novel Technological advances to protect people who exercise or work in thermally stressful conditions: a transition to more personalized guidelines.** *Appl Sci.* 2023; **13**(15): 8561.
[Publisher Full Text](#)
38. Villar J, Cheikh Ismail L, Victora CG, *et al.*: **International standards for newborn weight, length, and head circumference by gestational age and sex: the Newborn cross-sectional study of the INTERGROWTH-21st Project.** *Lancet.* 2014; **384**(9946): 857–68.
[PubMed Abstract](#) | [Publisher Full Text](#)

Open Peer Review

Current Peer Review Status:   

Version 2

Reviewer Report 24 February 2025

<https://doi.org/10.21956/wellcomeopenres.26241.r118297>

© 2025 Wyrwoll C. This is an open access peer review report distributed under the terms of the [Creative Commons Attribution License](#), which permits unrestricted use, distribution, and reproduction in any medium, provided the original work is properly cited.



Caitlin Wyrwoll

School of Human Sciences, The University of Western Australia, Crawley, WA, Australia

I am happy with the changes and approve the article.

Competing Interests: No competing interests were disclosed.

Reviewer Expertise: Reproductive physiology: environmental exposures in pregnancy.

I confirm that I have read this submission and believe that I have an appropriate level of expertise to confirm that it is of an acceptable scientific standard.

Version 1

Reviewer Report 16 December 2024

<https://doi.org/10.21956/wellcomeopenres.25517.r114245>

© 2024 Xu Z. This is an open access peer review report distributed under the terms of the [Creative Commons Attribution License](#), which permits unrestricted use, distribution, and reproduction in any medium, provided the original work is properly cited.



Zhiwei Xu

¹ Griffith University, Gold Coast, Australia

² Griffith University, Gold Coast, Australia

In this study protocol, Dr. Bonell and colleagues present the details of a prospective cohort study on the impacts of heat stress during pregnancy in Gambia. The proposed study is very interesting, and I enjoyed reading the protocol. I have several comments for the authors to consider:

Main comments:

1. In Table 1, the authors provide detailed information used in the sample size calculation ($n = 764$). It would be helpful if they could provide the sources of evidence for the effect sizes they proposed in this table (e.g., 0.15, 0.2, and 0.14).
2. It is great that the authors have considered potential loss to follow-up in the sample size calculation. To improve clarity, it would be helpful if they could provide details on the expected drop-out rate and explain why they anticipate this rate.
3. I believe the authors may have previous experience interacting with government staff and pregnant women in the study setting through their past projects. If this is the case, could the authors please briefly mention their relevant experiences in the Methods section? Previous interactions with the target population would strengthen the practicality of participant recruitment.
4. The authors propose validating the 50 x 50 m grid cell heat exposure data with data collected from individual heat stress monitors. However, it seems that the grid cell data represents outdoor heat exposure, while the individual monitor data likely represents indoor heat exposure. Although indoor heat exposure is often correlated with outdoor exposure, they are not necessarily the same. It would be helpful if the authors could provide more details on the data validation process.

Minor comment:

Given that the authors plan to use wearable tracker devices to collect data on pregnant women's heart rate, activity, and sleep, it would be worthwhile to consider establishing a reference group before initiating data collection. This would help better understand pregnant women's interest in and capacity for interacting with digital technology in the study setting.

Is the rationale for, and objectives of, the study clearly described?

Yes

Is the study design appropriate for the research question?

Yes

Are sufficient details of the methods provided to allow replication by others?

Partly

Are the datasets clearly presented in a useable and accessible format?

Not applicable

Competing Interests: No competing interests were disclosed.

Reviewer Expertise: Heat epidemiology and biostatistics

I confirm that I have read this submission and believe that I have an appropriate level of expertise to confirm that it is of an acceptable scientific standard.

Reviewer Report 07 December 2024

<https://doi.org/10.21956/wellcomeopenres.25517.r112341>

© 2024 Factor-Litvak P. This is an open access peer review report distributed under the terms of the [Creative Commons Attribution License](#), which permits unrestricted use, distribution, and reproduction in any medium, provided the original work is properly cited.



Pam Factor-Litvak

¹ Columbia University,, New York, USA

² Columbia University,, New York, USA

Minor comments:

1. Birth outcome assessments: please standardize the timing of collection because, for example, birth weight can vary between delivery and 72 hours after birth. Or, alternatively, collect these data at both times.

2. Will the newborn anthropometrics be collected at the time of the NBAS assessment and at the final assessment at 28 days?

3. The fecal swab for microbiota at 28 days is important. Perhaps consider also getting a meconium swab as well. In that way you may be able to determine changes in the microbiota related to heat stress.

4. I would suggest considering using distributed lag models to assess possible critical times of exposure to heat stress for the various outcomes.

Is the rationale for, and objectives of, the study clearly described?

Yes

Is the study design appropriate for the research question?

Yes

Are sufficient details of the methods provided to allow replication by others?

Yes

Are the datasets clearly presented in a useable and accessible format?

Not applicable

Competing Interests: No competing interests were disclosed.

Reviewer Expertise: Environmental epidemiology, including air pollution and climate, with a focus on outcomes over the life course.

I confirm that I have read this submission and believe that I have an appropriate level of expertise to confirm that it is of an acceptable scientific standard, however I have significant reservations, as outlined above.

Author Response 04 Feb 2025

Ana Bonell**Minor comments:**

1. Birth outcome assessments: please standardize the timing of collection because, for example, birth weight can vary between delivery and 72 hours after birth. Or, alternatively, collect these data at both times.

Author response: Thank you for this comment. We endeavour to capture all birth anthropometry at the time of delivery, but in some cases (if the delivery occurs outside of the hospitals we are working in or at home) then we may miss this. Only in those cases, do we then visit the participants to collect the anthropometry and birth details, and we have a window of 72 hours otherwise the data will be recorded as missing. All the anthropometric data is time and date stamped so we should be able to determine if there has been a delay in recording the data and manage the data accordingly. The following text has been changed to reflect this (section 3.9) Neonatal anthropometric measurements will be taken at birth, to include birth weight, birth length, head circumference and infant sex, as well as a final maternal blood sample. On the occasion where participants deliver outside of the study hospital or the study team are unable to attend the birth, neonatal anthropometry will be collected up to 72 hours of birth and otherwise will be coded as missing.

2. Will the newborn anthropometrics be collected at the time of the NBAS assessment and at the final assessment at 28 days?

Author response: The NBAS assessment will take place at around 28 days, along with a final review of the infant, a brief clinical exam and a short survey. The newborn anthropometry will be completed within 72 hours of delivery, but mostly at the time of delivery and only in exceptional circumstances will this be delayed to 72 hours. Please see changed to text (section 3.11) Each newborn will be assessed once at around 28 days using the NBAS Brazelton scale which includes 28 behavioral and 18 reflex responses. This assessment will be completed at the participant's home or the clinic, in a quiet and safe place, mid-way between feeds. Assessment usually takes 20-30 minutes and is an interactive assessment covering how the baby responds to light and sound when asleep and how they follow faces and objects when awake.

3. The fecal swab for microbiota at 28 days is important. Perhaps consider also getting a meconium swab as well. In that way you may be able to determine changes in the microbiota related to heat stress.

Author response: Thank you for this comment. As indicated this is an important study and would require several other samples to allow a detailed and comprehensive analysis. Therefore after careful consideration of budget and man-power constraints we have dropped this aspect of the study. We have removed this completely from the study protocol and will hope that a different cohort will have the capacity to focus on this.

4. I would suggest considering using distributed lag models to assess possible critical times of exposure to heat stress for the various outcomes.

Author response: Thank you for this comment. We will certainly consider a distributed lag model – we have added this to the data analysis plan in section 7.5, see below text: Linear, non-linear, non-linear distributed lag models and logistic regression models will be used for these analyses.

Competing Interests: No competing interests were disclosed.

Reviewer Report 20 November 2024

<https://doi.org/10.21956/wellcomeopenres.25517.r108580>

© 2024 Wyrwoll C. This is an open access peer review report distributed under the terms of the [Creative Commons Attribution License](#), which permits unrestricted use, distribution, and reproduction in any medium, provided the original work is properly cited.



Caitlin Wyrwoll

¹ School of Human Sciences, The University of Western Australia, Crawley, WA, Australia

² School of Human Sciences, The University of Western Australia, Crawley, WA, Australia

This is an extensive outline of the study which aims to create a whole picture of heat exposure experienced by pregnant women in a coastal and inland area of The Gambia. The outcomes of this study will be a valuable addition to the field. My major concern is that there is currently methodology context missing which needs to be added for clarity.

Major comments

- The assessment of air and noise pollution and other environmental factors such as food and water security are being conducted as a substudy. It is unclear how these factors will be used in the data analysis as a potential confounder of the effects of heat. This, and how it will be factored in to the study conclusions, needs to be clearer.
- The methodology for the questions asked at enrolment and then monthly is unclear. Will standardised/validated questionnaires be used (eg. IWISE)? please provide more information on this. Given the Investigators are spending this time with the participants, it would be useful to also ask them their views on the impact of heat on pregnancy, as well as their opinions on solutions and needs to prevent the adverse impact of heat on pregnancy outcomes.
- Cord blood samples will be taken at birth from “fetal vein” (page 10). The vein in the umbilical cord is the vessel from the mum/placenta. Would an umbilical arterial cord sample be more appropriate to represent fetal metabolism/blood gas?
- The placental sampling approach is unclear and it needs a standardised methodology detailed to ensure limited variability with the different people responsible for taking these samples. Why are samples being taken from the maternal-facing portion of the placenta? Normally samples are taken from the fetal-facing side as the site of the umbilical cord insertion can impact the establishment of quadrants for taking the samples. Will the samples be the complete depth of the placenta and in what order will the four samples be

taken? Will there be further dissection of the samples so that the villous portion of the placenta is analysed using RNA seq? How will collected samples be orientated to ensure the maternal and fetal aspects of the placenta are readily identified? Genes of interest via RNA seq of placental samples are not listed. The technique for the histological approach needs more detail - how are the syncytial knots identified using 2D stereology? Would 3D imaging approaches be more appropriate given it is likely that angiogenic pathways and fetal vascular branching patterns will have been impacted.

- What wearable device will be used and how will the data be accessed and downloaded?
- How will the rectal swab be collected and what will be done to ensure limited contamination and how will they be stored? Please provide more comprehensive information on the microbiota analysis.

Minor comments

- Full stop missing after first paragraph of introduction (pg 4)
- Full stop/"and" missing in first sentence of "important potential confounders" paragraph. (pg 11)
- Reword second paragraph under data analysis and statistical considerations: maternal physiology. Very long sentence with lots of "ands" (pg 11)
- mL not mls (pg 10)
- "Maternal hyperthermia increases the risk of normal embryonic and fetal development" – rephrase to indicate increasing the risk of negatively affecting development (pg 4)
- Some concluding sentences are spaced as a lone separate paragraph throughout – tag onto end of preceding paragraph

Is the rationale for, and objectives of, the study clearly described?

Yes

Is the study design appropriate for the research question?

Yes

Are sufficient details of the methods provided to allow replication by others?

No

Are the datasets clearly presented in a useable and accessible format?

Not applicable

Competing Interests: No competing interests were disclosed.

Reviewer Expertise: Reproductive physiology; environmental exposures in pregnancy.

I confirm that I have read this submission and believe that I have an appropriate level of expertise to confirm that it is of an acceptable scientific standard, however I have significant reservations, as outlined above.

Author Response 04 Feb 2025

Ana Bonell

Major comments

Comment: The assessment of air and noise pollution and other environmental factors such as food and water security are being conducted as a substudy. It is unclear how these factors will be used in the data analysis as a potential confounder of the effects of heat. This, and how it will be factored in to the study conclusions, needs to be clearer.

Author response: Thank you for this valid comment. We have attempted to make our analysis plan clearer by expanding on the details of the main study as well as clarifying what the sub-study involves. Please see edited text below (found on section 7 of the protocol):

1. Accurately assign exposure

For heat stress exposure we will develop spatiotemporal statistical models. We will utilise machine learning to predict a set of heat stress indices to develop a 50x50-meter cell of the study area. The individual heat stress monitors worn by participants at 28 and 35 weeks of gestational age will be used as the ground truth or predictor variable. This will be used during model training to make predictions for the cohort of individual heat stress exposure throughout pregnancy. Stationary monitors, local weather station data, global gridded climate data sets and satellite imagery will be the target variables. The model will include additional environmental variables, such as, but not exclusively: Normalised Difference Vegetation Index (NDVI), land surface temperature, WBGT, UTCI. The model will be validated using a train and test split. We will then assess the spatial and temporal variation of each weather variable across the study region through maps and thermal drone imagery and identify high-risk neighbourhoods and contextual variables associated with high-low exposure and periods of years with higher/lower heat/heat stress or better/worse thermal comfort. Air pollution will be assigned from the stationary monitors which give hourly rolling average concentrations of PM1, PM 2.5, PM10 and AQI for the study regions. 7.2 Sub-study details: In 60 participants we will estimate indoor air pollution and noise pollution. In addition to air pollution, residents of urban environments are often exposed to higher noise levels, which have shown to detrimentally affect sleep and brain function.^{36,37} These participants will be randomly selected from those due their 28 or 35 week visit and will have additional monitors placed at their home. The Smart Citizen Kit 2.3^Ô will be used to monitor air pollution in the cooking area and the NSRT_mk4^Ô will be placed outside the bedroom window to monitor noise exposure. This subset of data will be analysed independently to the main study to give insights into the interaction between noise, indoor air pollution and heat exposure with maternal physiological measurements in this setting.

Comment: The methodology for the questions asked at enrolment and then monthly is unclear. Will standardised/validated questionnaires be used (eg. IWISE)? please provide more information on this. Given the Investigators are spending this time with the participants, it would be useful to also ask them their views on the impact of heat on pregnancy, as well as their opinions on solutions and needs to prevent the adverse impact of heat on pregnancy outcomes.

Author response: The questions, where possible are based on validated questionnaires that have prior use at an international level. For well-being we used the WHO well-being Index: <https://www.who.int/publications/m/item/WHO-UCN-MSD-MHE-2024.01#:~:text=The%20WHO%2D5%20is%20a,translated%20into%20over%2030%20languages>

. For food insecurity we used FAO's Food Insecurity Experience Scale: <https://openknowledge.fao.org/server/api/core/bitstreams/7dad7fe4-b4ec-4ffa-be41-ac7c32910c96/content> For water security we used the abridged Water Insecurity Experiences (WISE) scales: <https://www.ipr.northwestern.edu/wise-scales/> For sleep disturbance we used the PROMIS sleep disturbance short form: https://www.painconsortium.nih.gov/sites/default/files/documents/PROMIS_SF_v1.0_Sleep_Disturbance_4a.pdf. See updated text below: This will include questions on recent illness (e.g. recent infections and medication use), the WHO-5 well-being Index assessment, subjective sleep disturbance using the PROMIS sleep disturbance form, food insecurity using the Food Insecurity Experience Scale from FAO and water insecurity using the abridged Water Insecurity Experience Scales. Thank you for your comments on asking about views of impact of heat on pregnancy, solutions etc. We have planned this as a qualitative piece of work that will include in-depth interviews, focus groups discussions and workshops on solutions. This will be extensive and therefore is its own stand-alone study (although there will be overlap in recruitment and it will be undertaken in the same areas).

Comment: Cord blood samples will be taken at birth from "fetal vein" (page 10). The vein in the umbilical cord is the vessel from the mum/placenta. Would an umbilical arterial cord sample be more appropriate to represent fetal metabolism/blood gas?

Author response: This is indeed true – that the arterial cord blood sample would be informative for assessing fetal metabolism. However we are interested in what the fetus is receiving from the mother via the placenta, which is why we are sampling the fetal vein. We are also particularly interested in metabolic substrate, hormone and cytokine levels – as we hypothesize a key role for impaired placental nutrient supply, reduced hormone production and increased release of inflammatory cytokines into the fetal circulation that contribute to poor pregnancy outcomes in heat stressed mothers. See additional text added (section 4.1): 13mL of cord blood will be collected from the fetal vein to study whether metabolic substrates, hormones or cytokines levels released from the mother via the placenta may contribute to poor pregnancy outcomes in those exposed to heat stress.

Comment: The placental sampling approach is unclear and it needs a standardised methodology detailed to ensure limited variability with the different people responsible for taking these samples. Why are samples being taken from the maternal-facing portion of the placenta? Normally samples are taken from the fetal-facing side as the site of the umbilical cord insertion can impact the establishment of quadrants for taking the samples. Will the samples be the complete depth of the placenta and in what order will the four samples be taken? Will there be further dissection of the samples so that the villous portion of the placenta is analysed using RNA seq? How will collected samples be orientated to ensure the maternal and fetal aspects of the placenta are readily identified? Genes of interest via RNA seq of placental samples are not listed. The technique for the histological approach needs more detail - how are the syncytial knots identified using 2D stereology? Would 3D imaging approaches be more appropriate given it is likely that angiogenic pathways and fetal vascular branching patterns will have been impacted.

Author response: We are using our established method for sampling the human placenta which takes into account the cord insertion site and is able to overcome heterogeneity in

placental morphology and gene expression (<https://www.mdpi.com/2073-4409/12/7/1093>). The exception to this published method, is that for our study, we are taking 1 instead of 2 samples per quadrant. These 4 samples are being taken mid-way from the cord insertion site to the peripheral edge of the placenta. We have intentionally chosen to sample from the maternal facing portion of the placenta, as that is the site of main materno-fetal substrate exchange. We obtain a 2cm cube biopsy from each quadrant, trim off ~0.5cm from the maternal facing edge and then divide that remaining villous sample into 0.5cm³ pieces that are immediately snap freeze, put into RNA-later and immersed in fixative (completing the snap freezing for all quadrants first, then RNA-later and then fixative). We are not taking a sample that has the complete depth of the placenta – and so there is no need to discriminate the fetal from the maternal facing portions of the placenta. Main genes of interest include those related to growth, angiogenesis/endothelial function, inflammation, nutrient transport, endocrine support of pregnancy, and heat/cellular stress (<https://pubmed.ncbi.nlm.nih.gov/37501633/>). The method for quantifying syncytial knots can be found in our paper (<https://www.mdpi.com/2073-4409/12/7/1093>). If we indeed find vascular changes in the placenta, in the future and with more resources, we would be very keen to employ 3D imaging. Please find edited text below (found in study protocol under section 3.10) 3.10 Placenta sampling Each placenta will undergo gross examination and placental parameters, including placental weight, disc dimensions (length, weight and depth) and membrane features will be recorded including a photograph. Four samples will be taken from the maternal-facing portion of the placenta using a standardized biopsy quadrant method which take into account the cord insertion site and is able to overcome heterogeneity in placental morphology and gene expression[AS1] . These four samples will be taken mid-way from the cord insertion site to the peripheral edge of the placenta. Each 2cm cube biopsy from each quadrant will have ~0.5cm trimmed from the maternal facing edge and then will be divided into 3 equal parts that are either: 1) immediately snap frozen (all 4 quadrants snap frozen first); 2) put into RNA-later and then fixative; 3) fixed in paraformaldehyde, for later analyses.³⁴

Comment: What wearable device will be used and how will the data be accessed and downloaded?

Author response: Wearable device is the Garmin Vivosmart 5 tracker (section 3.8). Details of how the data will be accessed has been added to section 6.1 – see below: All participants will be allocated a unique identifying number at recruitment. Data generated by the Garmin devices will be downloaded from the devices, using a custom-developed Application Programming Interface at the end of the 5-7 days of wearing the device, linked to the unique identifying number and then reset.

Comment: How will the rectal swab be collected and what will be done to ensure limited contamination and how will they be stored? Please provide more comprehensive information on the microbiota analysis.

Author response: Thank you for this comment. We have with careful consideration of budget and man-power constraints had to drop this aspect of the study. The microbiota analysis had significant time and cost implications which unfortunately the study is unable to deliver on. Therefore we have removed this completely from the study protocol and will

hope that a different cohort will have the capacity to focus on this.

Minor comments

Comment: Full stop missing after first paragraph of introduction (pg 4)

Author response: added

Comment: Full stop/"and" missing in first sentence of "important potential confounders" paragraph. (pg 11)

Author response: Edited out in rewording as above.

Comment: Reword second paragraph under data analysis and statistical considerations: maternal physiology. Very long sentence with lots of "ands" (pg 11)

Author response: Edited out in rewording as detailed above

Comment: mL not mls (pg 10)

Author response: changed

Comment: "Maternal hyperthermia increases the risk of normal embryonic and fetal development" – rephrase to indicate increasing the risk of negatively affecting development (pg 4)

Author response: Changed to: Maternal hyperthermia increases the risk of abnormal embryonic and fetal development.

Comment: Some concluding sentences are spaced as a lone separate paragraph throughout – tag onto end of preceding paragraph

Author response: changed

Competing Interests: No competing interests were disclosed.