



## Development and implementation of a heat early warning system for Jodhpur Heat Action Plan

The aim is to develop an early warning system (EWS) for heat waves as part of the Jodhpur Heat Action Plan, with a special focus on protecting vulnerable groups (e.g. construction workers, miners, slum dwellers) who are at high risk of heat-related illness. The project team launched the Heat Action Plan in March 2023 and is now working with the meteorological authorities to establish a heat warning system.

Below: Application of sun reflective cool paints on houses as heat adaptation strategy.





*“By having a heat EWS, we can prepare communities to prevent heat-related illnesses and fatalities. Investing in the EWS is a social responsibility for the wellbeing of our communities.”*

**Siraz Hirani**

Senior Program Management Specialist, MHT

The central component of the Jodhpur Heat Action Plan is the heat EWS. We are working with local communities and stakeholders to identify the specific needs and challenges of vulnerable populations in their area. Four key components of the EWS:

① Risk assessment

Conduct a detailed risk assessment using primary and secondary data. Maps of thermal hotspots will be produced, which will provide information on the varying distribution of hotspots in the city, and thus help in planning targeted interventions for the most vulnerable. This includes population sensitivity and adaptive capacity as two important parameters.

② Forecast detection and monitoring

Design of a percentile-based colour coded extreme heat EWS with the Indian Meteorological Department.

③ Dissemination and communication

Development of creative communication strategies to disseminate the warning to officials of relevant government agencies and to the general public, especially vulnerable groups.

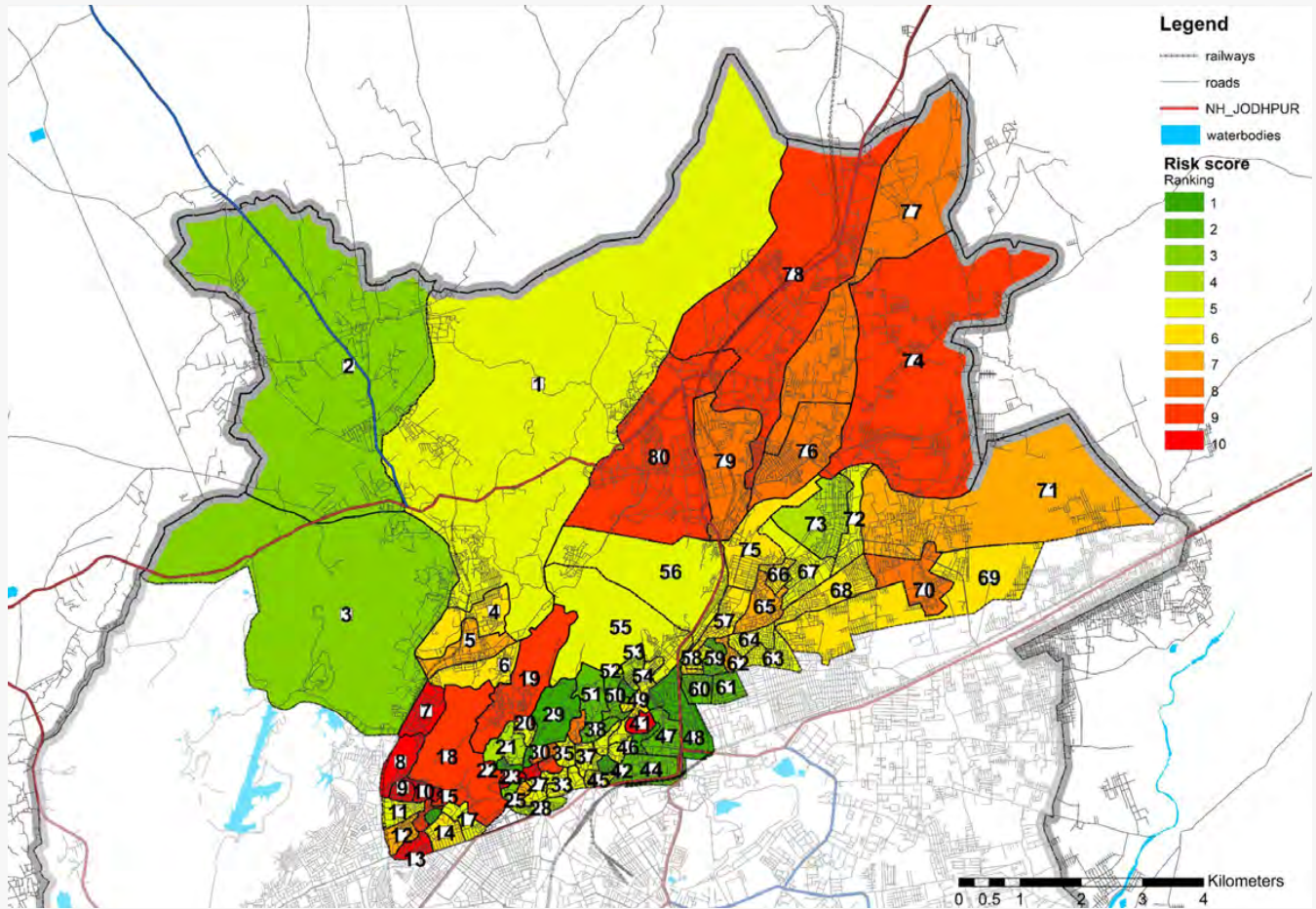
④ Preparedness and capacity building

Organising capacity building programmes for government officials and community members to ensure that the community is well informed about precautions during the heat wave.

By providing early warnings and targeted interventions, the project intends to protect the health and wellbeing of those most at risk and strengthen their resilience to future heatwaves. It will provide valuable insights and data on heat waves to inform future interventions in Jodhpur and other cities.

Below: Consultation workshop with Jodhpur Nagar Nigam to conceptualise Jodhpur Heat Action Plan.





Above: A ward level heat risk assessment map of Jodhpur Nagar Nigam – North.

MHT  
→ [mahilahousingtrust.org](http://mahilahousingtrust.org)